

PRODUCT CATALOG
2022 - 2023



www.senarulman.com



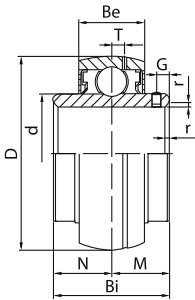
PILLOW BLOCK



PILLOW BLOCK

PILLOW BLOCK

UC SERIES

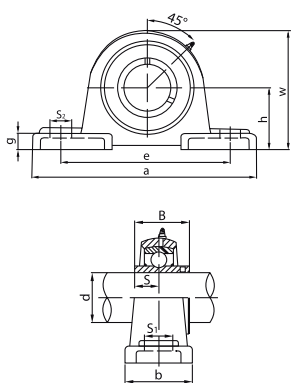


CODE	PRICE	d mm	D mm	Bi mm	Be mm	r mm	N mm	M mm	G mm	ds	T mm	Load Ratio	Static Load Rate	Weight kg
UC 204	2.80 \$	20	47	31	17	1	12.7	18.3	4.7	M6x0,75	4	12.84	6.65	0.18
UC 205	3.10 \$	25	52	34.1	17	1.5	14.3	19.8	5	M6x0,75	4.2	14.02	7.88	0.19
UC 206	4.15 \$	30	62	38.1	19	1.5	15.9	22.2	5	M6x0,75	5	19.46	11.31	0.31
UC 207	4.50 \$	35	72	42.9	20	2	17.5	25.4	6	M8x1	5.7	25.67	15.3	0.46
UC 208	7.15 \$	40	82	49.2	21	2	19	30.2	8	M8x1	6.3	29.52	18.14	0.63
UC 209	8.00 \$	45	85	49.2	22	2	19	30.2	8	M8x1	6.3	31.67	20.68	0.7
UC 210	9.50 \$	50	90	51.6	24	2	19	32.6	10	M10x1,25	6.6	35.07	23.18	0.78
UC 211	10.50 \$	55	100	55.6	25	2.5	22.2	33.4	10	M10x1,25	7	43.38	29.22	1.07
UC 212	11.50 \$	60	110	65.1	27	2.5	25.4	39.7	10	M10x1,25	7.6	47.76	32.93	1.52
UC 213	19.50 \$	65	120	65.1	28	2.5	25.4	39.7	10	M10x1,25	8.9	57.21	40	1.8



v pul

UC SERIES

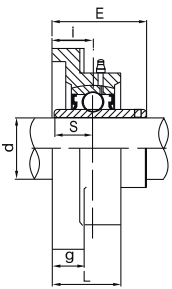
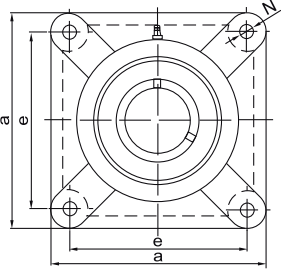


CODE	PRICE	d mm	h mm	a mm	e mm	b mm	S ₁ mm	S ₂ mm	g mm	W mm	S mm	B mm	Weight kg
UCP 204	2.85 \$	20	33.3	127	94	37	13	19	14	64	12.7	31	0.7
UCP 205	4.90 \$	25	36.5	140	105	38	13	19	15	69.5	14.3	34.1	0.76
UCP 206	6.00 \$	30	42.9	159	121	43	17	21	17	83	15.9	38.1	1.25
UCP 207	6.50 \$	35	47.6	167	127	45	17	21	18	92	17.5	42.9	1.55
UCP 208	7.00 \$	40	49.2	181	136	50	17	21	18	98	19	49.2	1.9
UCP 209	7.65 \$	45	54	190	146	52	17	21	20	106	19	49.2	2.2
UCP 210	10.00 \$	50	57.2	203	159	59	20	25	20	112	19	51.6	2.75
UCP 211	11.50 \$	55	63.5	218	171	57	20	25	23	124	22.2	55.6	3.3
UCP 212	15.00 \$	60	69.8	239	184	69	20	25	26	137	25.4	65.1	4.7
UCP 213	22.00 \$	65	76.2	264	202	68	25	30	27	147	25.4	65.1	5.6



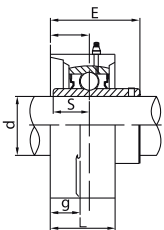
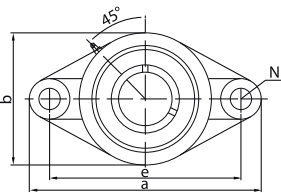
PILLOW BLOCK

UCF SERIES



CODE	PRICE	d mm	a mm	e mm	i mm	g mm	L mm	N mm	E mm	S mm	Weight kg
UCF 204	3.30 \$	20	86	64	15	12	25.5	12	33.3	12.7	0.61
UCF 205	3.20 \$	25	95	70	16	14	27	12	35.8	14.3	0.8
UCF 206	6.00 \$	30	108	83	18	14.3	31	12	40.2	15.9	1
UCF 207	5.60 \$	35	117	92	19	15.5	34	14	44.4	17.5	1.4
UCF 208	10.00 \$	40	130	102	21	15.5	36	16	51.2	19	1.8
UCF 209	11.00 \$	45	137	105	22	17.5	38	16	52.2	19	2.2
UCF 210	12.00 \$	50	143	111	22	17.5	40	16	54.6	19	2.4
UCF 211	14.50 \$	55	162	130	25	19.5	43	19	58.4	22.2	3.5
UCF 212	21.00 \$	60	175	143	29	19.5	48	19	68.7	25.4	4.2
UCF 213	26.00 \$	65	187	149	30	23	50	19	69.7	25.4	5.3

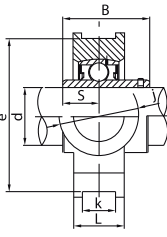
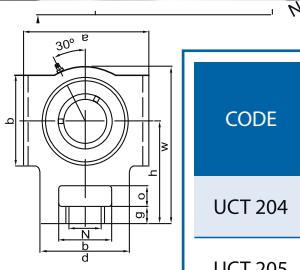
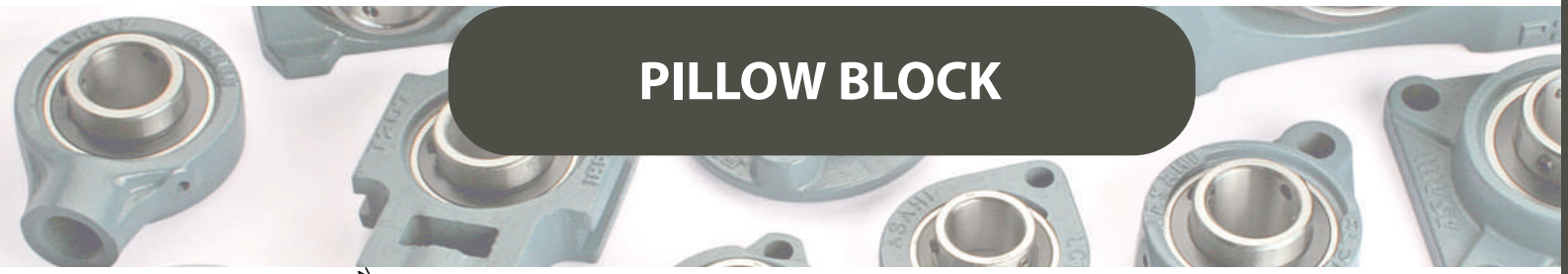
UCFL SERIES



CODE	PRICE	d mm	a mm	e mm	i mm	b mm	g mm	L mm	N mm	E mm	S mm	Weight kg
UCFL 204	3.10 \$	20	113	90	15	60	11	25.5	12	33.3	12.7	0.45
UCFL 205	4.60 \$	25	130	99	16	68	13	27	16	35.8	14.3	0.66
UCFL 206	5.00 \$	30	148	117	18	80	13	31	16	40.2	15.9	0.86
UCFL 207	7.00 \$	35	161	130	19	90	15	34	16	44.4	17.5	1.15
UCFL 208	9.00 \$	40	175	144	21	100	15	36	16	51.2	19	1.46
UCFL 209	11.00 \$	45	188	148	22	108	16	38	19	52.2	19	1.85
UCFL 210	12.50 \$	50	197	157	22	115	16	40	19	54.6	19	1.98
UCFL 211	14.00 \$	55	224	184	25	130	18	43	19	58.4	22.2	2.9
UCFL 212	21.00 \$	60	250	202	29	140	18	48	23	68.7	25.4	3.7
UCFL 213	26.00 \$	65	258	210	30	155	22	50	23	69.7	25.4	4.76

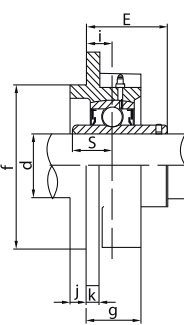
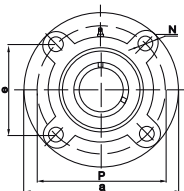
PILLOW BLOCK

PILLOW BLOCK



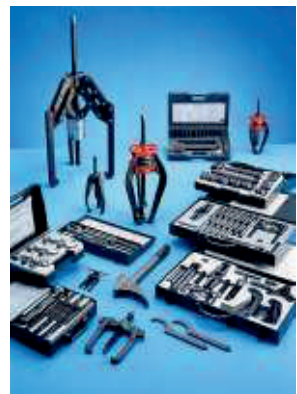
UC SERIES

CODE	PRICE	d mm	w mm	h mm	g mm	b mm	N mm	q mm	o mm	a mm	c mm	p mm	j mm	k mm	L mm	B mm	S mm	Weight kg
UCT 204	4.00 \$	20	94	61	10	51	19	32	16	89	76	51	32	12	21	31	12.7	0.72
UCT 205	4.50 \$	25	97	62	10	51	19	32	16	89	76	51	32	12	24	34.1	14.3	0.8
UCT 206	6.50 \$	30	113	70	10	57	22	37	16	102	89	56	37	12	28	38.1	15.9	1.26
UCT 207	9.00 \$	35	129	78	13	64	22	37	16	102	89	64	37	12	30	42.9	17.5	1.68
UCT 208	11.25 \$	40	144	88	16	83	29	49	19	114	102	83	49	16	33	49.2	19	2.28
UCT 209	12.50 \$	45	144	87	16	83	29	49	19	117	102	83	49	16	35	49.2	19	2.52
UCT 210	14.00 \$	50	149	90	16	86	29	49	19	117	102	83	49	16	37	51.6	19	2.75
UCT 211	19.00 \$	55	171	106	19	95	35	64	25	146	130	102	64	22	38	55.6	22.2	4.1
UCT 212	26.00 \$	60	194	119	19	102	35	64	32	146	130	102	64	22	42	65.1	25.4	4.9
UCT 213	33.00 \$	65	224	137	21	121	41	70	32	167	151	111	70	26	44	65.1	25.4	6.7



UC SERIES

CODE	PRICE	d mm	a mm	p mm	e mm	i mm	f mm	N mm	g mm	j mm	k mm	E mm	S mm	Weight kg
UCFC 204	5.00 \$	20	100	78	55.1	10	62	12	20.5	5	7	28.3	12.7	0.75
UCFC 205	6.00 \$	25	115	90	63.6	10	70	12	21	6	7	29.8	14.3	1
UCFC 206	8.00 \$	30	125	100	70.7	10	80	12	23	8	8	32.2	15.9	1.3
UCFC 207	10.00 \$	35	135	110	77.8	11	90	14	26	8	9	36.4	17.5	1.75
UCFC 208	11.00 \$	40	145	120	84.8	11	100	14	26	10	9	41.2	19	2
UCFC 209	14.50 \$	45	160	132	93.3	10	105	16	26	12	14	40.2	19	2.5
UCFC 210	16.50 \$	50	165	138	97.6	10	110	16	28	12	14	42.6	19	2.95
UCFC 211	20.00 \$	55	185	150	106.1	13	125	19	31	12	15	46.4	22.2	4
UCFC 212	27.00 \$	60	195	160	113.1	17	135	19	36	12	15	56.7	25.4	4.9
UCFC 213	34.00 \$	65	205	170	120.2	16	145	19	36	14	15	55.7	25.4	5.35





www.senarulman.com





Tuna Mahallesi Sanat Caddesi
Selçuklu İş Merkezi No: 17/214
Çamdibi / Bornova / İZMİR
Tel: +90 232 449 88 77
Faks : +90 232 449 90 40
e-posta : satis@senarulman.com